

Typical Embryo
at
4 Weeks from the Time of Conception
(6 Weeks LMP)

	Inches	Millimeters
Length from Crown to Rump	1/4	5



The size of this photograph is **larger** than the actual typical size of an embryo at this stage.

Lennart Nilsson/Bonnier Alba AB

The embryo has the beginning of a circulatory system. The heart has begun to beat and pump blood. There are three primary parts to the brain and the nerves are beginning to form. The locations of the ears, eyes and nose are just becoming evident.

Typical Embryo
at
6 Weeks from the Time of Conception
(8 Weeks LMP)

Length from Crown to Rump	Inches	Millimeters
	1/2	12



The size of this photograph is **larger** than the actual typical size of an embryo at this stage.

Lennart Nilsson/Bonnier Alba AB

The shape of the heart looks normal, although its inside walls are still developing. The umbilical cord is formed, the leg buds are just appearing, and the arm buds are forming with a flipper-like appearance. The spinal cord is also beginning to take shape.

Typical Embryo
at
8 Weeks from the Time of Conception
(10 Weeks LMP)

	Inches	Millimeters
Length from Crown to Rump	1	24



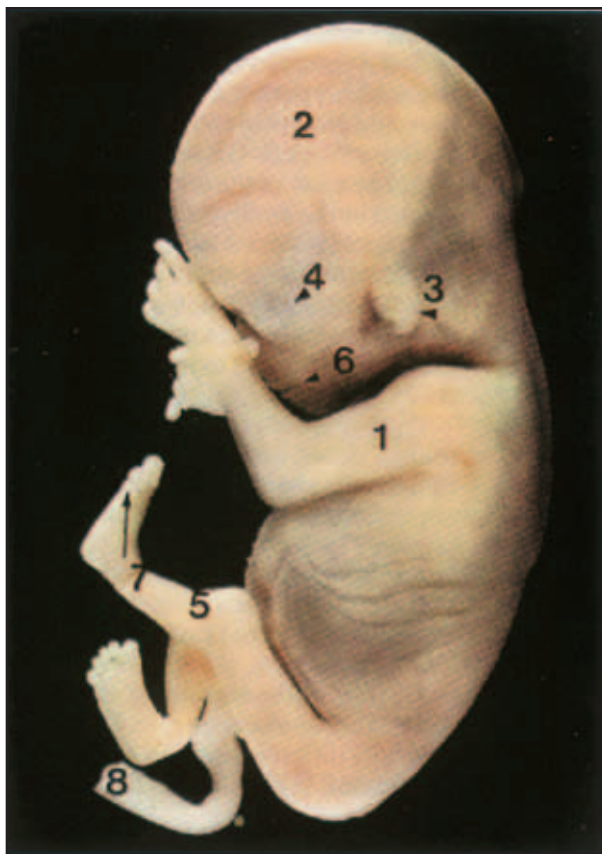
The size of this photograph is **larger** than the actual typical size of an embryo at this stage.

Lennart Nilsson/Bonnier Alba AB

The heart, liver and major blood vessels are formed. The shape of the lungs is nearly formed. The intestines are beginning to coil. The diaphragm is completed. The fingers are well formed, the toes almost. Eyes and ears are well formed. Tongue and taste buds are present. In the brain, there may be electrical waves, and occasionally, the embryo moves, although the woman doesn't feel it. Sex is not evident yet.

Typical Fetus
at
10 Weeks from the Time of Conception
(12 Weeks LMP)

	Inches	Millimeters
Length from Crown to Rump	2 3/8	61



1. arm
2. brain
3. ear
4. eye
5. knee
6. mouth
7. toes
8. umbilical cord

The size of this photograph is **larger** than the actual typical size of a fetus at this stage.

From *A Colour Atlas of Life Before Birth*
by Marjorie A. England, 1990.
Mosby-Wolfe Europe Limited, London, UK.

At this age the embryo is now called a fetus. A few centers of bone formation can be seen on ultrasound, and the heartbeat can usually be heard using electronic devices. The kidneys are present but are not fully functional. Fingernails are beginning to form, the nose is clearly visible, and mouth or finger movement may occur spontaneously.

Typical Fetus
at
12 Weeks from the Time of Conception
(14 Weeks LMP)

	Inches	Millimeters
Length from Crown to Rump	3 ³ / ₈	87



The size of this photograph is **larger** than the actual typical size of a fetus at this stage.

From **A Colour Atlas of Life Before Birth**
by Marjorie A. England, 1990.
Mosby-Wolfe Europe Limited, London, UK.

Some bones are formed sufficiently to be visible on x-ray. The spinal cord is continuing to develop. The bone marrow is making blood cells. The sex of the fetus can be correctly determined by experienced observers looking at ultrasound images.

Typical Fetus
at
14 Weeks from the Time of Conception
(16 Weeks LMP)

	Inches	Millimeters
Length from Crown to Rump	4 11/16	120



The size of this photograph is **smaller** than the actual typical size of a fetus at this stage.

Lennart Nilsson/Bonnier Alba AB

The nose, ears, eyes, arms and legs are well developed.

Typical Fetus
at
16 Weeks from the Time of Conception
(18 Weeks LMP)

	Inches	Millimeters
Length from Crown to Rump	5 1/2	140



1. ear
2. eye
3. umbilical cord

The size of this photograph is **smaller** than the actual typical size of a fetus at this stage.

From **A Colour Atlas of Life Before Birth**
by Marjorie A. England, 1990.
Mosby-Wolfe Europe Limited, London, UK.

Swallowing and chest movements are clearly present. The heart may be heard by stethoscope. The ears stand out from the head now. Muscles are spontaneously active. The mother may feel movements now. Also, in girls, the uterus and vagina are formed, in boys the testicles are formed.

Typical Fetus
at
18 Weeks from the Time of Conception
(20 Weeks LMP)

	Inches	Millimeters
Length from Crown to Rump	6 1/4	160



The size of this photograph is **smaller** than the actual typical size of a fetus at this stage.

From **A Colour Atlas of Life Before Birth**
by Marjorie A. England, 1990.
Mosby-Wolfe Europe Limited,
London, UK.

A protective waxy coating on the skin, called “vermix caseosa” is present. The spinal cord is continuing to develop. The bone marrow is making blood cells. The sex of the fetus is evident.

Typical Fetus
at
20 Weeks from the Time of Conception
(22 Weeks LMP)

	Inches	Millimeters
Length from Crown to Rump	7 1/2	190



1. abdomen
3. eye
6. umbilical cord

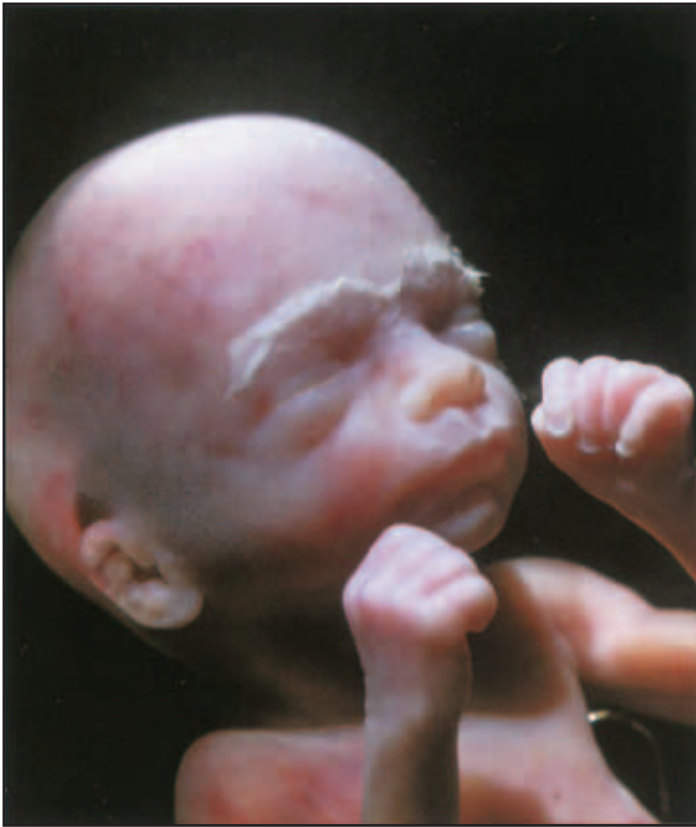
The size of this photograph is **smaller** than the actual typical size of a fetus at this stage.

From **A Colour Atlas of Life Before Birth**
by Marjorie A. England, 1990.
Mosby-Wolfe Europe Limited,
London, UK.

A downy hair covers the body. The lungs are still very immature, but in a few fetuses, may function outside the womb with the aid of life-support equipment.

Typical Fetus
at
22 Weeks from the Time of Conception
(24 Weeks LMP)

	Inches	Millimeters
Length from Crown to Rump	8 1/4	210



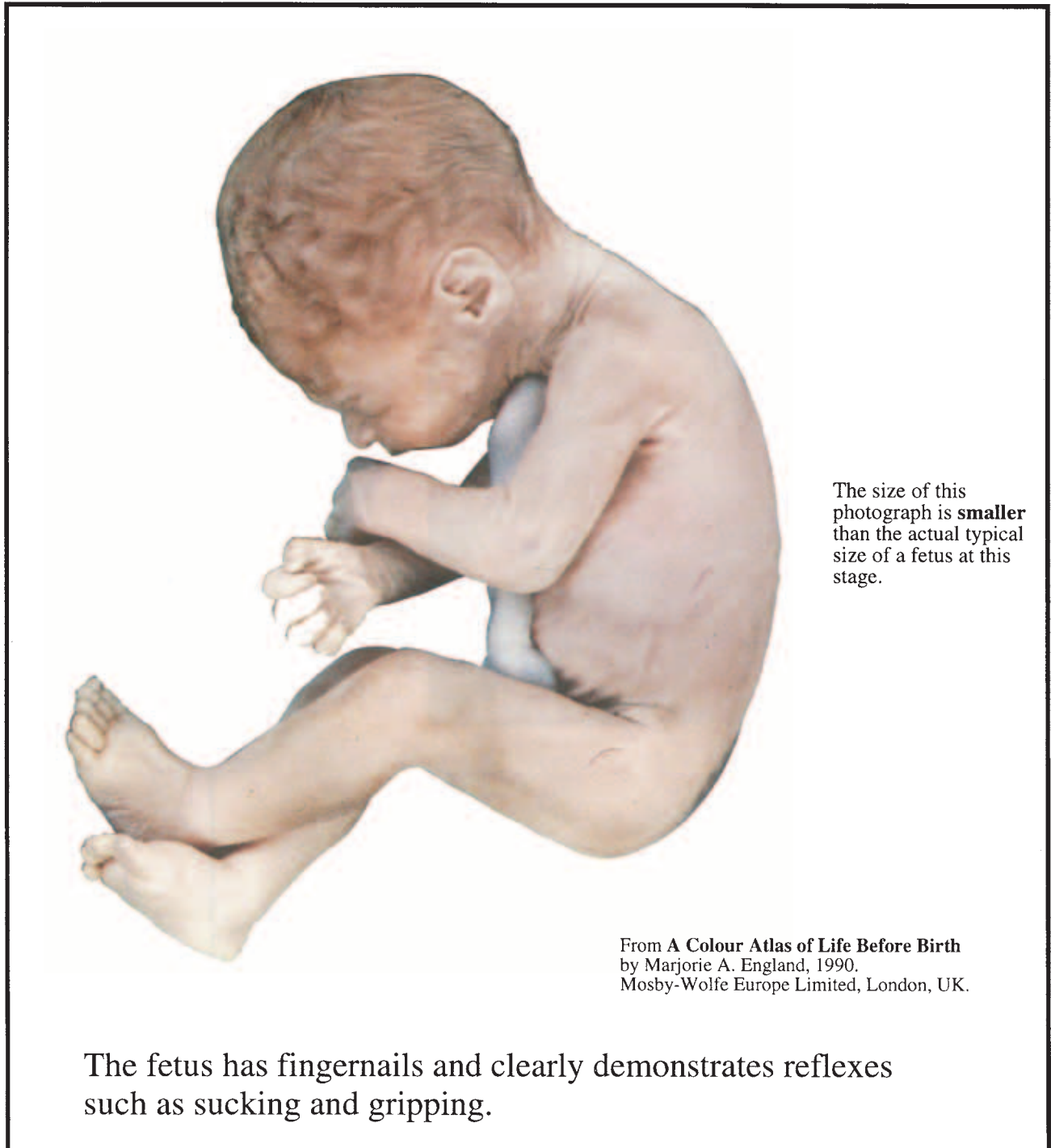
The size of this photograph is **smaller** than the actual typical size of a fetus at this stage.

Lennart Nilsson/Bonnier Alba AB

Most organ formation is now complete and the fetus enters a period of growth and further organ development.

Typical Fetus
at
24 Weeks from the Time of Conception
(26 Weeks LMP)

	Inches	Millimeters
Length from Crown to Rump	9	230



The size of this photograph is **smaller** than the actual typical size of a fetus at this stage.

From **A Colour Atlas of Life Before Birth**
by Marjorie A. England, 1990.
Mosby-Wolfe Europe Limited, London, UK.

The fetus has fingernails and clearly demonstrates reflexes such as sucking and gripping.

Typical Fetus
at
26 Weeks from the Time of Conception
(28 Weeks LMP)

	Inches	Millimeters
Length from Crown to Rump	9 ¹³ / ₁₆	250



1. abdomen
2. eye
3. hand

The size of this photograph is **smaller** than the actual typical size of a fetus at this stage.

From **A Colour Atlas of Life Before Birth**
by Marjorie A. England, 1990.
Mosby-Wolfe Europe Limited, London, UK.

The eyes are partially open and eyelashes are present.

Typical Fetus
at
28 Weeks from the Time of Conception
(30 Weeks LMP)

	Inches	Millimeters
Length from Crown to Rump	10 5/8	270



The size of this photograph is **smaller** than the actual typical size of a fetus at this stage.

From **A Colour Atlas of Life Before Birth**
by Marjorie A. England, 1990.
Mosby-Wolfe Europe Limited, London, UK.

At this time the eyes are fully open and there may be a good head of hair and slightly wrinkled skin.

Typical Fetus
at
38 Weeks from the Time of Conception
(40 Weeks LMP)

	Inches	Millimeters
Length from Crown to Rump	14 3/16	360



The size of this photograph is **smaller** than the actual typical size of a fetus at this stage.

From **A Colour Atlas of Life Before Birth**
by Marjorie A. England, 1990.
Mosby-Wolfe Europe Limited, London, UK.

At this time, the fetus is fully developed or full term. The chest is prominent and small breast buds protrude. Fingernails extend beyond the fingertips.