

4 Weeks Gestational Age (LMP)

2 Weeks from Conception

- The brain and the spinal cord begin to form.
- The heart begins to form.
- The stomach and intestines are forming.
- Bone tissue is growing.
- The eyes and ears are just beginning to form.
- The length is less than 1/8 inch.



6 Weeks Gestational Age (LMP)

4 Weeks from Conception

- The lungs are beginning to form, however; the major portion of the lung development is yet to occur.
- Brain activity can be recorded.
- Eyes are present, but no eyelids yet.
- The heart is more developed and is beating.
- Structures that will become arms and legs, called limb buds, begin to appear.
- Early reflexes develop.
- The length is less than 1/4 inch.



8 Weeks Gestational Age (LMP)

6 Weeks from Conception

- All essential organs have begun to form.
- Elbows are visible.
- Facial features - the eyes, nose, lips, and tongue - continue to develop.
- The outer ears begin to take shape.
- The hands and feet have fingers and toes, but might still be webbed.
- Organs begin to be controlled by the brain.
- The length is about 1/2 to 3/4 inch.





10 Weeks Gestational Age (LMP)

8 Weeks from Conception

- The developing unborn child is now called a *fetus*, rather than an *embryo*.
- The head is half the length of the body.
- The arms and legs are long and thin.
- Red blood cells are produced.
- The weight is less than ½ of an ounce.
- The length is about 1¼ to 1¾ inches.

12 Weeks Gestational Age (LMP)

10 Weeks from Conception

- The neck is present and the face well formed.
- The eyelids close and will reopen at about 24 weeks.
- Tooth buds appear.
- The arms and legs move.
- All body parts and organs are present.
- The fibers that carry signals to the brain are further developed.
- Definitive signs of male and female gender are present.
- A heartbeat can be heard with electronic devices.
- The hands can make a fist with fingers.
- The weight is about 1½ ounce.
- The length is about 2 to 3 inches.

14 Weeks Gestational Age (LMP)

12 Weeks from Conception

- The skin is almost transparent.
- The mouth makes sucking motions.
- Amniotic fluid is swallowed.
- The arms are in proportion to the body.
- The liver and pancreas are starting to work.
- The weight is about 2 ounces.
- The length is about 3 to 4 inches.



16 Weeks Gestational Age (LMP)

14 Weeks from Conception

- Swallowing and chest movements are clearly present.
- A fine layer of hair has begun to grow on the head.
- The head and body become proportional.
- The neck is lengthened and the head is now erect.
- The weight is approximately 3.9 ounces.
- The length is about 4 to 5 inches.



18 Weeks Gestational Age (LMP)

16 Weeks from Conception

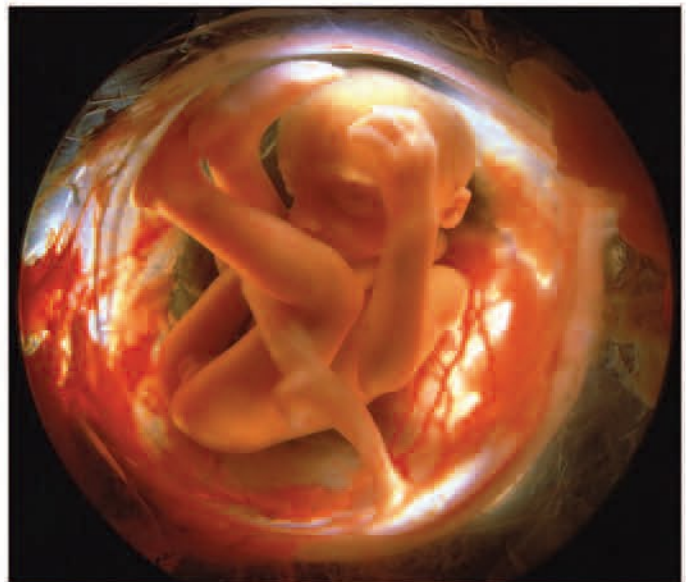
- The mother might feel movement.
- The arms and legs begin to punch and kick.
- The fingernails are well formed.
- The unborn child can suck its thumb.
- Taste buds are present.
- Male or female gender is evident.
- A protective waxy coating is present on the skin.
- The weight is 6 to 8 ounces.
- The length is about 5 to 6 inches.



20 Weeks Gestational Age (LMP)

18 Weeks from Conception

- Eyebrows and lashes appear.
- Breathing-like movements become regular and are detected by ultrasound, but the lungs have not developed enough to permit survival if birth occurs.
- Time of rapid brain growth.
- The unborn child turns its entire body side to side and front to back.
- The weight is about 11 ounces.
- The length is about 6 to 7 inches.





22 Weeks Gestational Age (LMP)

20 Weeks from Conception

- Rapid brain growth continues.
- Eyes are fully functional and capable of movement.
- Vocal cords are active.
- The unborn child has the reflex ability to grasp.
- There is little chance for survival outside the uterus.
- The weight is about 1 pound.
- The length is about 7 to 8 inches.

Note: Some experts have concluded that the unborn child is probably able to feel pain at about this stage, however, other experts disagree. Advances in medicine and science should continue to improve the chances for better understanding and clarity of this matter.



24 Weeks Gestational Age (LMP)

22 Weeks from Conception

- Unique footprints and fingerprints are present.
- The unborn child can hear outside sounds.
- The skin becomes less transparent as fat begins to deposit.
- Eyebrows and eyelashes are well formed.
- Actions such as hiccupping, squinting, smiling, and frowning might be seen through ultrasound.
- Surviving premature babies might have severe disabilities and require long-term intensive care.
- The weight is about 1 to 1 1/2 pounds.
- The length is about 8 to 9 inches.



26 Weeks Gestational Age (LMP)

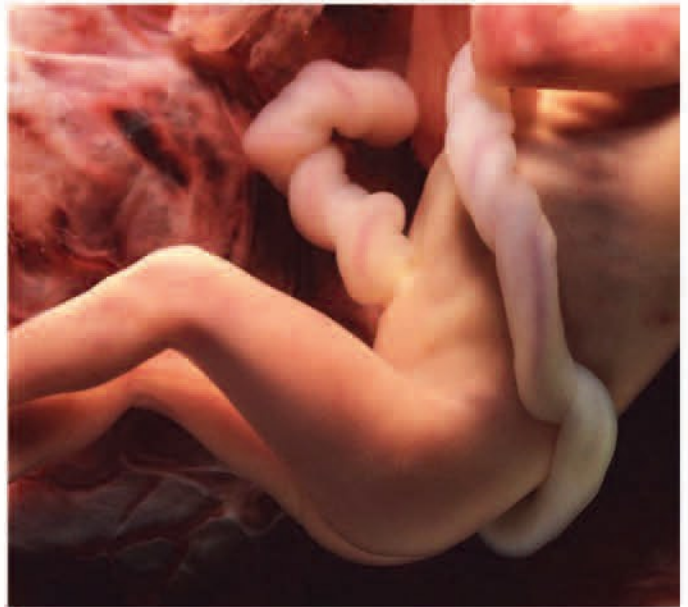
24 Weeks from Conception

- The central nervous system is developed enough to control some body functions.
- The eyes can open, close, and perceive light.
- The lungs have further matured and breathing is possible.
- The unborn child awakes and sleeps and exercises muscles by kicking and stretching.
- The weight is about 2 pounds.
- The length is about 9 to 10 inches.

28 Weeks Gestational Age (LMP)

26 Weeks from Conception

- Brain wave patterns resemble those of a full term baby.
- Another person can hear a heartbeat by listening to the pregnant woman's abdomen.
- There is a good chance of survival (with intensive care treatment) if birth occurs.
- The weight is about 2 to 2¼ pounds.
- The length is about 10 to 13 inches.



30 Weeks Gestational Age (LMP)

28 Weeks from Conception

- The central nervous system has increased control over body functions.
- Rhythmic breathing movements occur.
- The unborn child can respond to sound.
- The bones are fully developed but still soft and pliable.
- The weight is about 2½ to 3 pounds.
- The length is about 15 to 16 inches.



32 Weeks Gestational Age (LMP)

30 Weeks from Conception

- The lungs are still developing.
- Body temperature is partially under control.
- The skin is thicker, with more color.
- The connections between the nerve cells in the brain have increased.
- There is a good chance of long-term survival and the risk of long-term disability is low.
- The weight is about 3 to 4 pounds.
- The length is about 16 to 17 inches.

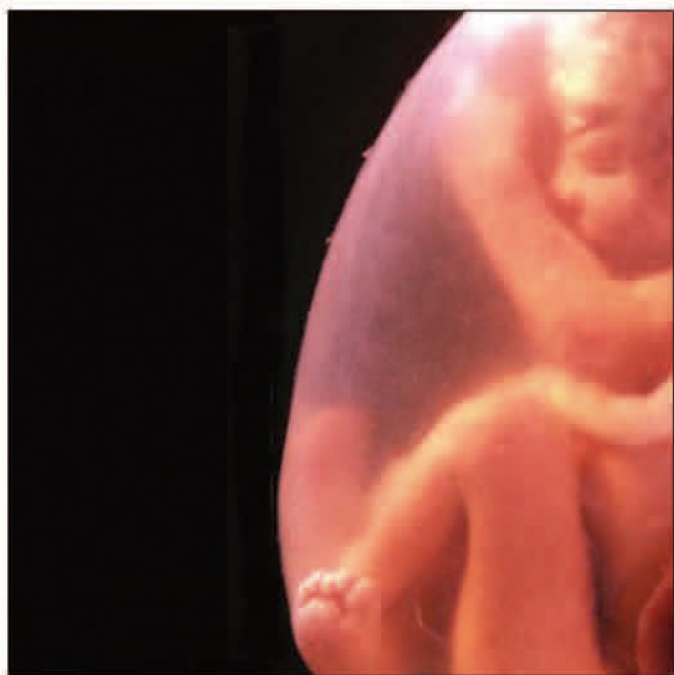




34 Weeks Gestational Age (LMP)

32 Weeks from Conception

- The skin is now pink and smooth.
- The ears have begun to hold shape.
- The eyes open during alert times and close during sleep.
- There is a very good chance of survival with a low chance for long-term disability.
- The weight is about 4 to 4½ pounds.
- The length is about 17 to 18 inches.



36 Weeks Gestational Age (LMP)

34 Weeks from Conception

- Fine hair begins to disappear.
- Body fat has increased.
- The fingernails reach the end of the fingertips.
- The chance of survival is excellent, but the newborn may require special medical care.
- Muscle tone is developed and the unborn child can turn and lift its head.
- The weight is about 5 to 6 pounds.
- The length is about 16 to 19 inches.



38 Weeks Gestational Age (LMP)

36 Weeks from Conception

- A newborn is considered full-term at 38 weeks.
- Small breast buds are present on both sexes.
- The unborn child can grasp firmly.
- The unborn child turns toward a light source.
- Almost all babies born now will survive.
- The average weight is greater than 6 pounds.
- The length is about 19 to 21 inches.